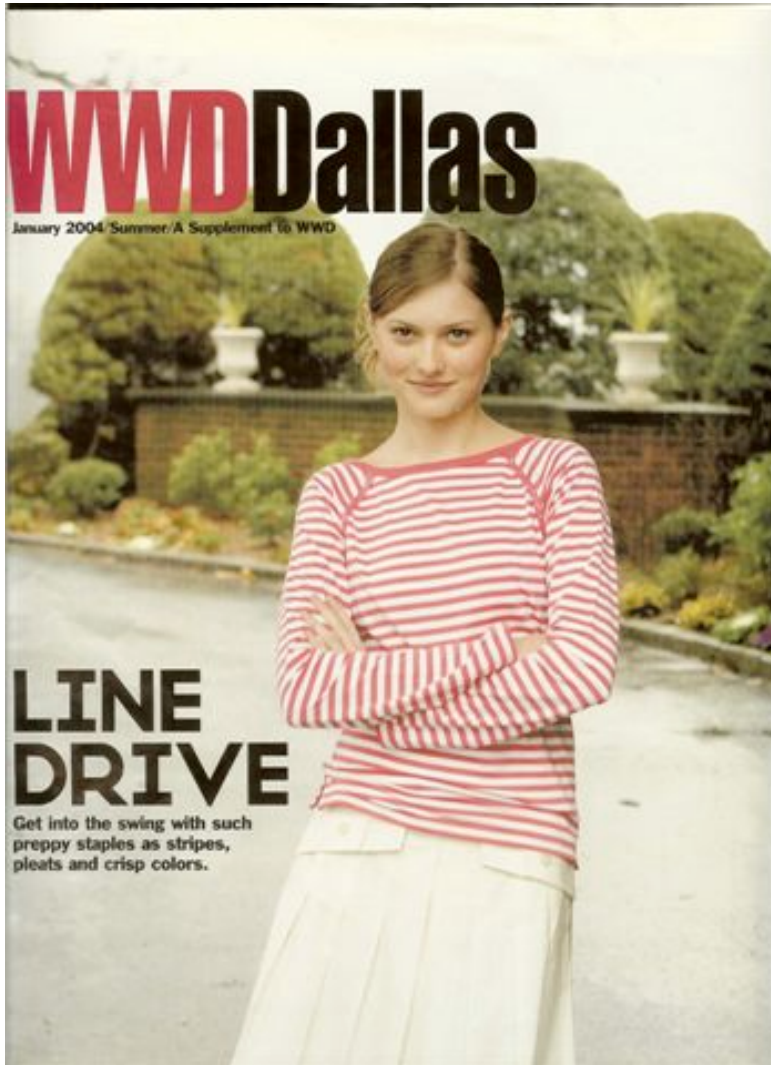


January 2004



LINE DRIVE

Get into the swing with such preppy staples as stripes, pleats and crisp colors.



Lara Jarmon jacket and Beata Dahl.

LIZ PALACIOS' gold brooch with olive and rose Swarovski crystals with lavender enamel of June Hall; GARRIGUE AND JAROSSAY's embroidered black silk clutch; Karla Kay Steen suit.

DIANE HATZMAN's sterling, quartz, enamel and cloisonné head brooch at Colby; JUNE BIJOU's carnelian and sterling ring at Summer Pallet; Austin Reed jacket; Fry top.



June Bijou Ring